

RIGHT-ANGLE WEAVE

# Raised. expectations

Take a right-angle weave base into the next dimension with a second layer of beads

*designed by* **Abby Cobb**



The more contrast in your choice of colors, the more the surface embellishment will stand out.

I love the versatility of seed beads, which allow me to design all sorts of jewelry of varying complexity. This bracelet is as easy to wear as it is to make. Choose a pair of your favorite hues, and you'll want to wear this everywhere.

## step by step

### Base

**[1]** On 3 yd. (2.7 m) of thread, pick up eight color A 11° seed beads. Tie the beads into a ring with a surgeon's knot (Online Basics). Sew through the first six As again (**figure 1, a-b**).

**[2]** Working in right-angle weave (Online Basics), pick up six As, and sew through the two As your thread exited in the previous stitch (**b-c**). Sew through the next four As (**c-d**).

**[3]** Pick up six As, sew through the two As your thread exited in the previous stitch (**d-e**), and through the next six As to position the needle to begin the next row (**e-f**). Flip your beadwork so it matches the illustrations as you work.

**[4]** Pick up six As, sew through the bottom two As in the previous row (**figure 2, a-b**), and the first two beads in the new stitch (**b-c**).

**[5]** Pick up four As, sew through the bottom two As in the middle stitch of the previous row (**figure 3, a-b**), two As in the last stitch (**b-c**), the four As just added (**c-d**), and the bottom two As in the next stitch of the previous row (**d-e**).

**[6]** Pick up four As, sew through two As in the previous stitch (**figure 4, a-b**), the bottom two As in the last stitch of the previous row (**b-c**), and the four beads added in the new stitch (**c-d**). Flip your beadwork.

**[7]** Repeat steps 4–6 for a total of 32 rows for a 7-in. (18 cm) bracelet, making fewer or more rows to reach your desired length. Don't end the threads, or your beads will be filled with thread and knots, making it difficult to add the embellishment on the surface of the bracelet.

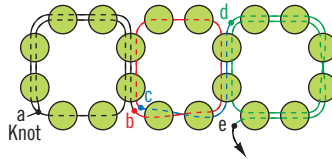


FIGURE 1

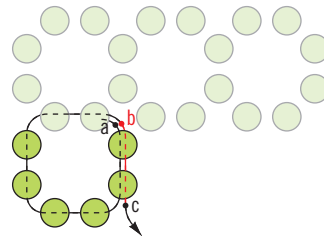


FIGURE 2

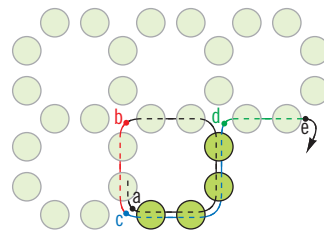


FIGURE 3

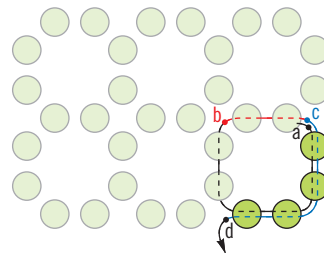


FIGURE 4

### materials

bracelet 7 in. (18 cm)

- 10 g 11° Japanese seed beads in each of 2 colors: A, B
- 2-strand clasp
- nylon beading thread, size D
- beading needles, #12

### EDITOR'S NOTE:

You can use jump rings to attach the clasp if desired. After completing the design, simply end the threads, and attach a jump ring to two right-angle weave stitches on each end. – Anna



## Surface embellishment

**[1]** Secure 3 yd. (2.7 m) of thread in the center stitch of an end row by sewing through all eight As in the stitch (figure 5, a–b). This will hold your thread in place until you finish the embellishment. Sew through the beadwork to exit the first pair of edge As in the end row (b–c).

**[2]** Pick up three color B 11° seed beads, and sew through the next two As along the edge (c–d). Repeat to the end of the row (d–e). Sew through the next four As (e–f).

**[3]** Pick up a B, and sew through the center B from the last embellishment stitch (figure 6, a–b). Pick up a B, and sew through the next two As in the base (b–c). Repeat until you reach the last two As in the base (c–d).

**[4]** Sew through the base to exit the next column of As (d–e).

**[5]** Repeat the embellishment as in steps 2 and 3.

**[6]** Sew through the base to exit the end As (figure 7, point a). Sew through one loop of one half of the clasp, and the next two end As in the base (a–b). Sew through the other loop of the clasp, and the next two end As in the base (b–c). Retrace the thread path to reinforce the clasp join. End the working thread (Online Basics), and any other thread on this end of the bracelet.

**[7]** Using the longest remaining tail, repeat step 6 on the other end of the bracelet. ●

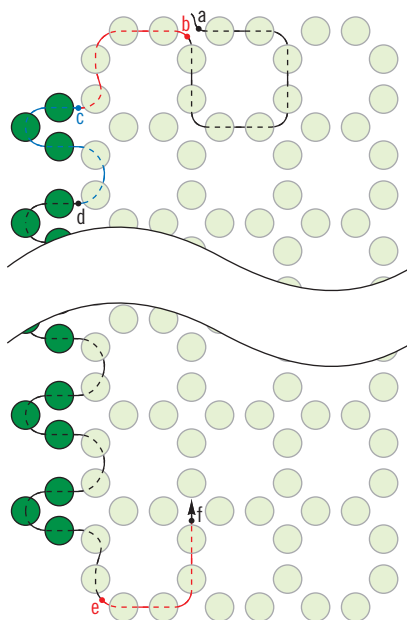


FIGURE 5

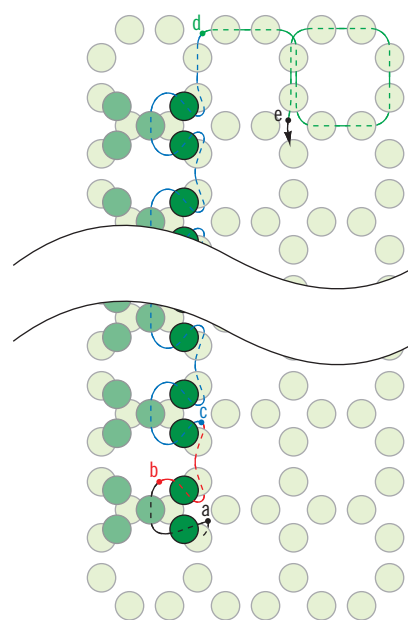


FIGURE 6

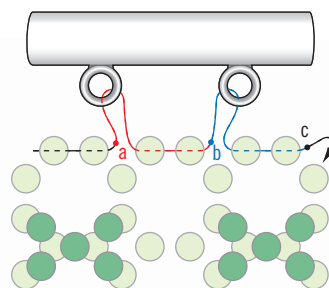


FIGURE 7



**Abby Cobb**  
has been  
designing  
jewelry for  
10 years,  
and prefers

working with inexpensive  
materials. She can be reached  
at [ajcobb\\_10@yahoo.com](mailto:ajcobb_10@yahoo.com).



# Get Over 100 New Projects This Year



***Bead&Button*** magazine is your complete beading resource.

Subscribe today to...

- Learn new techniques!
- Expand your beading skills!
- Get scores of projects ranging from basic to advanced!

Projects use a variety of stitches, including peyote, herringbone, ladder, bead crochet, and more. All projects are fully tested and include instructions you can count on!

Plus, subscribers have exclusive online access! Post photos of your work in the Subscriber Gallery and download free projects.

## Subscribe to *Bead&Button* Today!

Visit [www.BeadAndButton.com/promo](http://www.BeadAndButton.com/promo)

Enter promotional code: **IK87D**

Or call 1-800-533-6644

Mon. – Fri., 8:30am – 5:00pm Central Time. Outside the U.S. and Canada, call 262-796-8776, x661.